

# Gotu Kola Extract

*Centella asiatica (L.) Urban*

INCI: Centella Asiatica Extract

## Origin

Distributed in the south and central regions of China. Also available in India, Sri Lanka, Malaysia, Japan, Australia, and central and southern Africa.



Fully tested, verified, and ID authenticated.

## Agronomy

Wild

## Why We Choose It:

- Potent Polyphenol-rich Antioxidant
- Effective metabolic antioxidant for cardiovascular support, healthy inflammatory response, brain health & focus
- Powerful Adaptogen
- Sustainable & Renewable
- Secure Stable Supply

## Category

Polyphenol (Terpene)

<b>Format</b>	<b>Powder</b>
<b>Color</b>	<b>Brownish</b>
<b>Active Compounds</b>	<b>Asiatic Acid Asiaticoside Madecassoside</b>
<b>Extraction Method</b>	<b>Water</b>
<b>Common Usage Level</b>	<b>60-120 mg</b>
<b>Pack Size</b>	<b>25 kg</b>
<b>Shelf Life</b>	<b>3 years</b>
<b>Carriers</b>	<b>Maltodextrin</b>
<b>Part Used</b>	<b>Whole Grass</b>

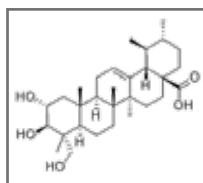
## Applications



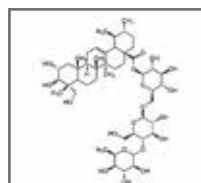
## Health Functions

- ✓ Brain Health & Cognition
- ✓ Cardiovascular Support
- ✓ Live Support
- ✓ Skin Care
- ✓ Sports Nutrition: Performance

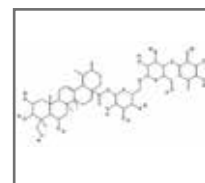
## Molecular Structure



Asiatic Acid  
CAS #: 464-92-6



Asiaticoside  
CAS #: 16830-15-2



Madecassoside  
CAS #: 34540-22-2

**Custom Product Specifications & Formulation Services Available**



FULLY VERTICALLY INTEGRATED GLOBAL SUPPLY CHAIN AT SCALE



QUALITY • TRANSPARENCY • SUSTAINABILITY

Allergen Free

Gluten Free

No Artificial Colors & Flavors

Clean Label

100% Natural

You may also be interested in:

*Pomegranate Ginkgo Polygonum Cuspidatum*



Botanify Your Product Line Today

**SAMPLE REQUEST  
& FREE CONSULTATION**

Certifications:



CHINA  
Global Innovation Center  
+86 21 68981820  
info@layn.com.cn

ASIA PACIFIC  
Manufacturing Site  
+86 773 3568889  
marketing@layn.com.cn

EMEA  
Layn Europe SRL  
+39 019 7704395  
info@layn.eu

AMERICAS  
Layn USA, Inc  
+1 949 387 6840  
info@layn-usa.com  
info@layn-latam.com