

# Sweet Blackberry Tea Extract

*Rubus chingii var. suavissimus (S. Lee) L. T. Lu*

INCI: *Rubus Suavissimus (Raspberry) Leaf Extract*



## Origin

Trees native to Gaungxi Province of China and grow exclusively in the region.



## Agronomy

Wild



Fully tested, verified, and ID authenticated.

## Why We Choose It:

- Potent Polyphenol-rich Antioxidant
- Unique Ingredient with Strong Story
- Strong Consumer Ingredient Recognition
- Sustainable & Renewable
- Secure Stable Supply

## Category

Polyphenol (Terpene)

## Applications



## Health Functions

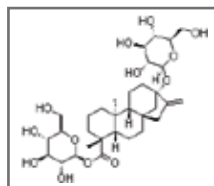
- ✓ Allergy
- ✓ Antioxidant
- ✓ Cardiovascular Support
- ✓ Healthy Blood Sugar
- ✓ Healthy Inflammatory Response
- ✓ Skin Care
- ✓ Weight Management

## Sensory Functions

- ✓ Bitterness Masking
- ✓ Flavor Enhancing
- ✓ Sweetness Enhancing

Format	Powder
Color	Green
Active Compound	Rubusoside
Extraction Method	Ethanol/Water
Common Usage Level	100-250 mg
Pack Size	25 kg
Shelf Life	3 years
Carriers	None
Part Used	Leaf

## Molecular Structure



Rubusoside

CAS #: 64849-39-4

Custom Product Specifications & Formulation Services Available



FULLY VERTICALLY INTEGRATED GLOBAL SUPPLY CHAIN AT SCALE



QUALITY • TRANSPARENCY • SUSTAINABILITY

Allergen Free

Non GMO Verified

Gluten Free

No Artificial Colors & Flavors

Clean Label

100% Natural

You may also be interested in:

*Green Tea Olive Leaf Grape Seed*



Botanify Your Product Line Today

**SAMPLE REQUEST  
& FREE CONSULTATION**

Certifications:



CHINA  
Global Innovation Center  
+86 21 68981820  
info@layn.com.cn

ASIA PACIFIC  
Manufacturing Site  
+86 773 3568889  
marketing@layn.com.cn

EMEA  
Layn Europe SRL  
+39 019 7704395  
info@layn.eu

AMERICAS  
Layn USA, Inc  
+1 949 387 6840  
info@layn-usa.com  
info@layn-latam.com